

Panel | Acoustic

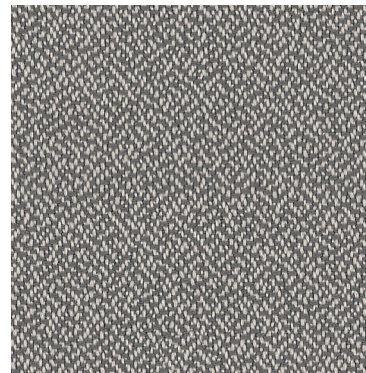
# Broadcast 2758



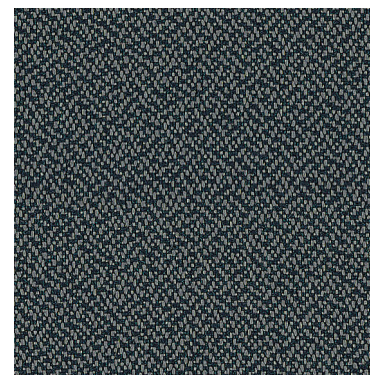
Chicory  
1205



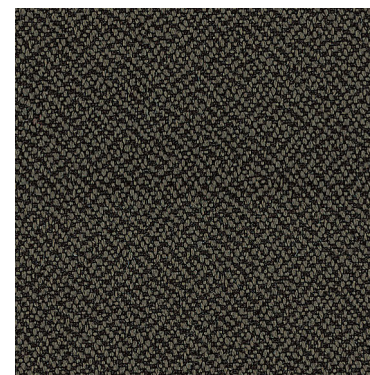
Serengeti  
1196



Shade  
2372



Graphite  
2375



Mink  
2686

# Broadcast 2758

Panel | Acoustic

## Specifications

<b>Content</b>	100% polyester
<b>Weight</b>	9.5 ± 0.5 oz./lin. yd
<b>Width</b>	66" min. useable
<b>Repeat</b>	none

## Cleaning Code

Standard Care Label W-S. Clean with water based cleaning agents, foam or pure, water free solvents. Vacuuming or light brushing is recommended to prevent dust and soil buildup. May also be disinfected with hydrogen peroxide, alcohol, and quaternary ammonium (quat) based cleaners.

## Miscellaneous





- Application testing of this product is recommended.
- Colors may vary between dye lots.
- This is a directional fabric.

**Proudly woven in North America supporting our local communities.**

## **Guilford of Maine** Collection

Renowned for its exceptional performance and style, Guilford of Maine has set industry standards in acoustics and panel fabrics for many decades. We present the Guilford of Maine Collection - a selection of timeless fabrics.

## Performance


-  **Colorfastness to light (AATCC 16.3 Option 3)**  
Grade 4 min. at 40 hours
-  **Colorfastness to crocking (AATCC 8)**  
Grade 4 min. dry & Grade 3 min. wet
-  **Breaking Strength (ASTM D5034)**  
150 lbf min. warp and 100 lbf min. fill
-  **Flammability**  
ASTM E84 Class I or A

## Acoustical Performance

Our acoustic fabrics are all acoustically transparent. This represents the amount of sound that passes through the fabric.

**Acoustic Transparency:** 95%

For more detailed results, please consult our website.

 This pattern is included in the underwriters laboratory panel fabric recognition program. Additional testing of this U.L. recognized fabric is not required on approved panels from participating manufacturers.

\*Certification Marks owned by the Association for Contract Textiles, Inc.