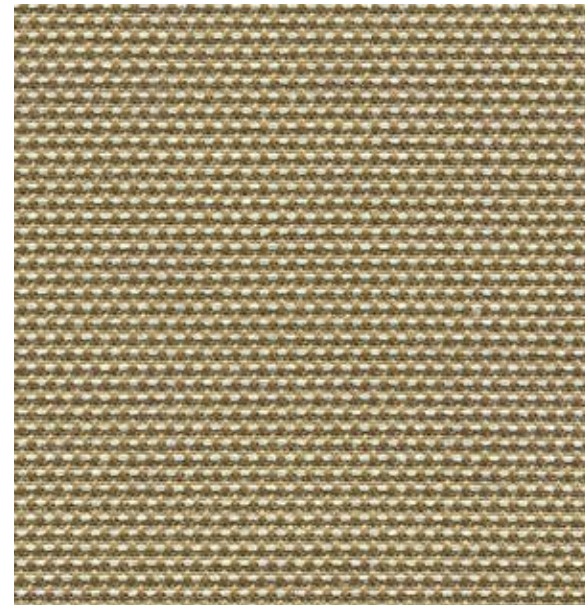


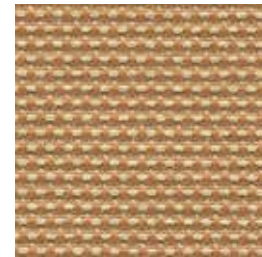
Recycled Content  
Bleach Cleanable  
Stain Repellent

Seating | Panel | Acoustic

# Jane 9085



Natural  
4061



Gold  
4020



Persimmon  
4050



Pomegranate  
4081



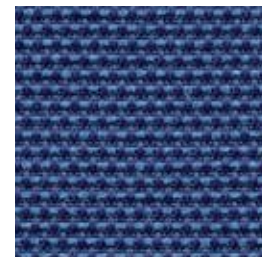
Chive  
4070



Steel  
4100



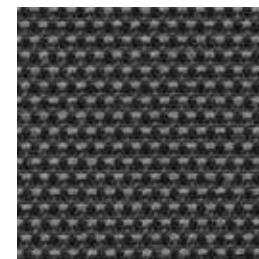
Blueberry  
4091



Ultramarine  
4030



Lapis  
4041



Jet  
4040

# Jane 9085

Seating | Panel | Acoustic

## Specifications

<b>Content</b>	100% pre-consumer recycled polyester
<b>Weight</b>	9.7 ± 0.5 oz./lin. yd
<b>Width</b>	54" min. useable
<b>Repeat</b>	none
<b>Treatment</b>	stain repellent

## Cleaning Code

Standard Care Label W-S. Clean with water based cleaning agents, foam or pure, water free solvents. Vacuuming or light brushing is recommended to prevent dust and soil buildup.

**Bleach Cleanable** - May be cleaned with a 10% bleach-to-water solution. Rinse well after cleaning. May also be disinfected with hydrogen peroxide, alcohol, and quaternary ammonium (quat) based cleaners.

## Miscellaneous

- Application testing of this product is recommended.
- Colors may vary between dye lots.
- This is a directional fabric.

Proudly woven in North America supporting our local communities.

## Sustainability

100% recycled and recyclable



## Performance

**Colorfastness to light (AATCC 16.3 Option 3)**  
Grade 4 min. at 40 hours

**Colorfastness to crocking (AATCC 8)**  
Grade 4 min. dry & Grade 3 min. wet

**Breaking Strength (ASTM D5034)**  
200 lbf min. warp and 130 lbf min. fill

**Seam Slippage (ASTM D4034)**  
50 lbf min. warp and fill

**Pilling Resistance (ASTM D3511)**  
Class 4 min.

**Flammability**  
CA Technical Bulletin 117-2013 Section 1  
ASTM E84 Class I or A

**Abrasion (ASTM D4157)**  
50,000 double rubs min. cotton duck

## Acoustical Performance

Our acoustic fabrics are all acoustically transparent. This represents the amount of sound that passes through the fabric.

**Acoustic Transparency:** 90%

For more detailed results, please consult our website.

This pattern is included in the underwriters laboratory panel fabric recognition program. Additional testing of this U.L. recognized fabric is not required on approved panels from participating manufacturers.

\*Certification Marks owned by the Association for Contract Textiles, Inc.

duvalttex

duvalttex

USA & INTERNATIONAL | T 800-544-0200  
CANADA | T 418 227-9897  
For samples, visit [guilfordofmaine.com](http://guilfordofmaine.com)