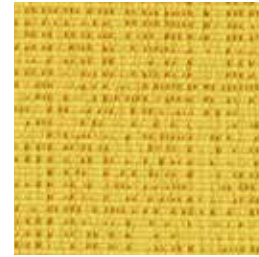


Marin 1300



Dolphin
1147



Sunfish
1153



Mangrove
1154



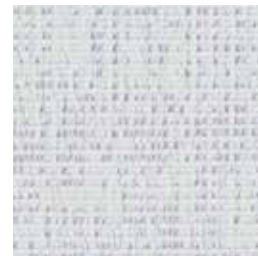
Swell
1155



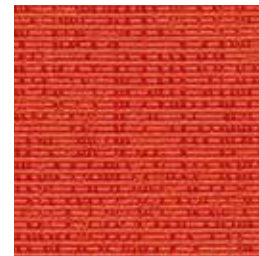
Benthic
1157



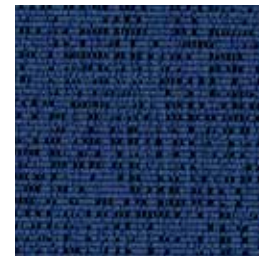
Great White
1143



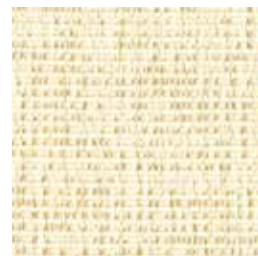
Ice Edge
1145



Clownfish
1152



Intertidal
1156



Tusk
1144



Sea Glass
1146



Red Snapper
1151



Carrageen
1150



Sand
1142



Pelican
1141



Grey Whale
1148



Blacktip
1149

Specifications

Content	90% post-consumer recycled polyester including ocean waste 10% polyester
Weight	12.5 ± 1.0 oz./lin. yd
Width	67" min. useable
Repeat	19.1" vertical 12.76" horizontal

Cleaning Code

Standard Care Label W-S. Clean with water based cleaning agents, foam or pure, water free solvents. Vacuuming or light brushing is recommended to prevent dust and soil buildup. May also be disinfected with hydrogen peroxide, alcohol, and quaternary ammonium (quat) based cleaners.

Miscellaneous

- Application testing of this product is recommended.
- Colors may vary between dye lots.
- This is a directional fabric.

Proudly woven in North America supporting our local communities.

Sustainability

OCEAN WASTE CLEAN IMPACT TEXTILES®
For every pound of fabric produced, up to half a pound of marine waste is removed from the ocean.

SEAQUAL INITIATIVE

By partnering with the SEAQUAL INITIATIVE, we transform ocean waste into amazing textiles.

Duvaltex is an official and authorized advertiser of SEAQUAL® YARN, the SEAQUAL INITIATIVE and their related trademarks, under licence agreement. Only SEAQUAL licensees are permitted to publicly advertise details about SEAQUAL trademarks.

Performance

- Colorfastness to light (AATCC 16.3 Option 3)**
Grade 4 min. at 40 hours
- Colorfastness to crocking (AATCC 8)**
Grade 4 min. dry & Grade 3 min. wet
- Breaking Strength (ASTM D5034)**
245 lbf min. warp and 170 lbf min. fill
- Flammability**
ASTM E84 Class I or A

Acoustical Performance

Our acoustic fabrics are all acoustically transparent. This represents the amount of sound that passes through the fabric.

Acoustic Transparency: 90%

For more detailed results, please consult our website.

This pattern is included in the underwriters laboratory panel fabric recognition program. Additional testing of this U.L. recognized fabric is not required on approved panels from participating manufacturers.

*Certification Marks owned by the Association for Contract Textiles, Inc.