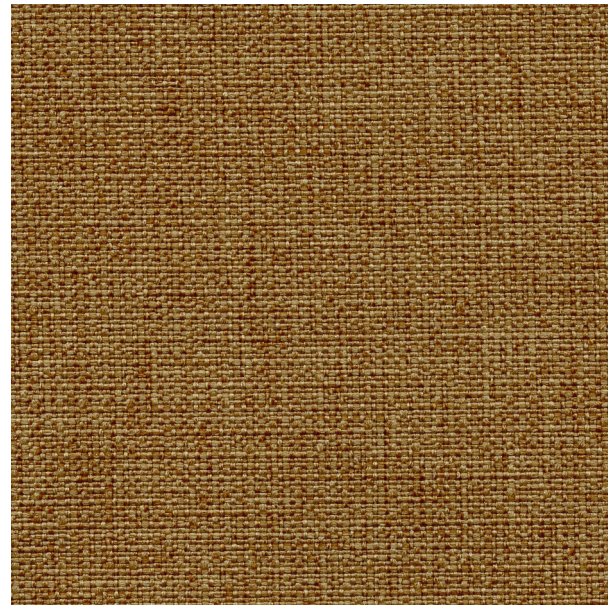
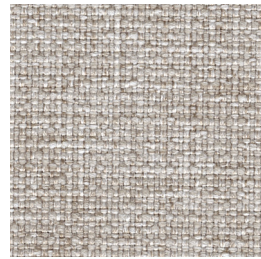


Palette 2155



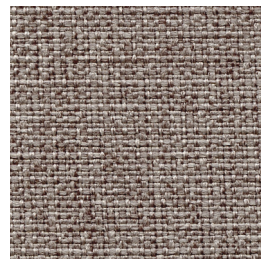
Acorn
1137



Cutch
1135



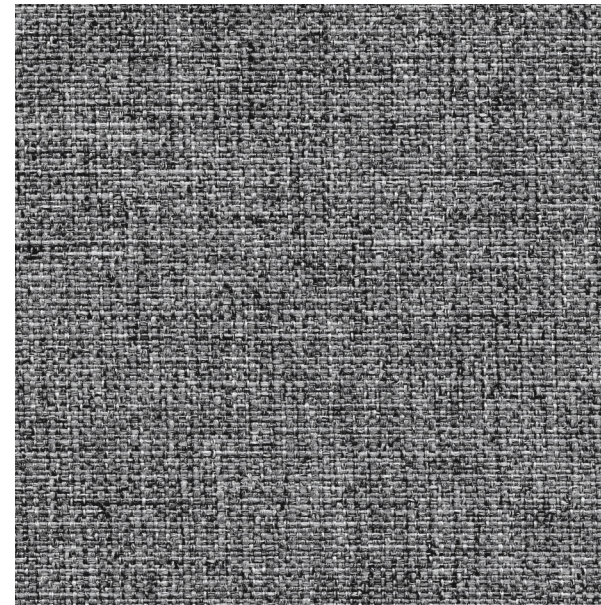
Chamomile
1131



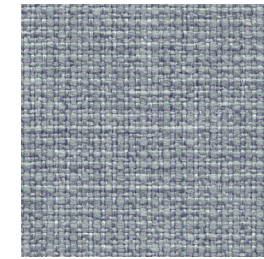
Alder
1136



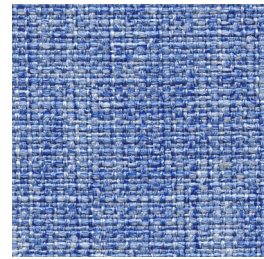
Artichoke
1145



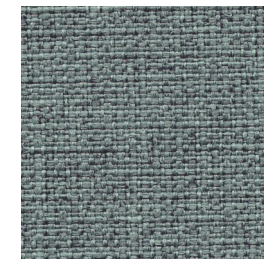
Birch Bark
1133



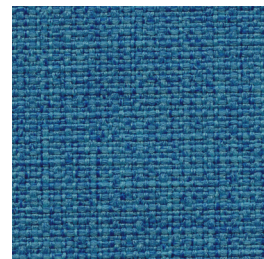
Alkanet
1132



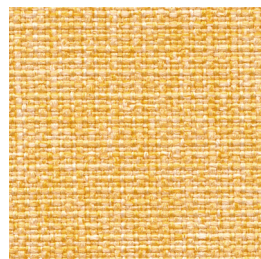
Cornflower
1151



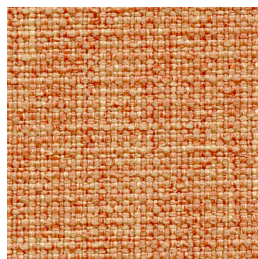
Lichen
1149



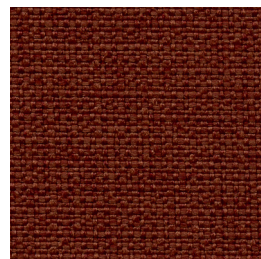
Saxon Blue
1150



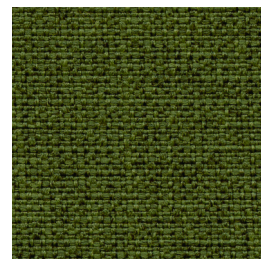
Sunflower
1144



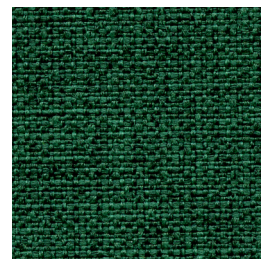
Sandalwood
1143



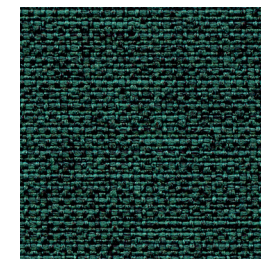
Annatto
1142



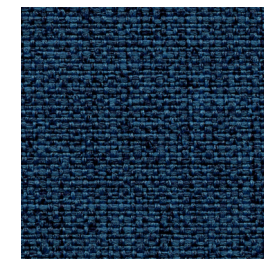
Sorrel
1146



Spinach
1147



Nettle
1148



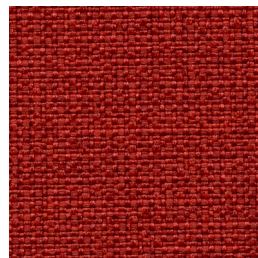
Indigo
1152



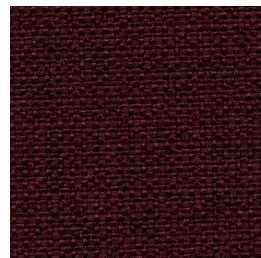
Knotweed
1153



Paprika
1141



Sumac
1140



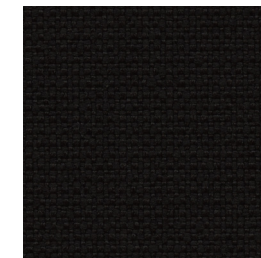
Murex
1139



Walnut
1138



Iron
1134



Logwood
1154

Palette 2155

Seating | Panel | Acoustic

Specifications

Content	100% polyester
Weight	12 ± 1.0 oz./lin. yd
Width	54" min. useable
Repeat	none

Cleaning Code

Standard Care Label W-S. Clean with water based cleaning agents, foam or pure, water free solvents. Vacuuming or light brushing is recommended to prevent dust and soil buildup. May also be disinfected with hydrogen peroxide, alcohol, and quaternary ammonium (quat) based cleaners.

Miscellaneous

- Application testing of this product is recommended.
- Colors may vary between dye lots.
- This is a directional fabric.

Proudly woven in North America supporting our local communities.

Sustainability



Performance


	Colorfastness to light (AATCC 16.3 Option 3) Grade 4 min. at 40 hours
	Colorfastness to crocking (AATCC 8) Grade 4 min. dry & Grade 3 min. wet
	Breaking Strength (ASTM D5034) 295 lbf min. warp and 280 lbf fill
	Seam Slippage (ASTM D4034) 85 lbf min. warp and 75 lbf fill
	Pilling Resistance (ASTM D3511) Class 4 min.
	Flammability ASTM E84 Class I or A
	Abrasion (ASTM D4157) 100,000 double rubs min. cotton duck

Acoustical Performance

Our acoustic fabrics are all acoustically transparent. This represents the amount of sound that passes through the fabric.

Acoustic Transparency: 90%

For more detailed results, please consult our website.

 This pattern is included in the underwriters laboratory panel fabric recognition program. Additional testing of this U.L. recognized fabric is not required on approved panels from participating manufacturers.

*Certification Marks owned by the Association for Contract Textiles, Inc.