

Recycled Content
Bleach Cleanable

Seating | Panel | Acoustic

Synopsis 2136



Bisque
1212



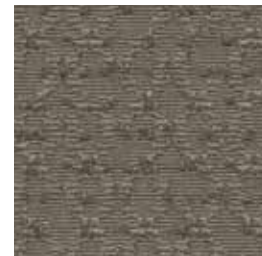
Butterscotch
1213



Chartreuse
1214



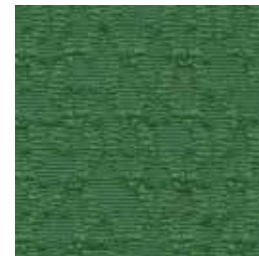
Cerulean
1218



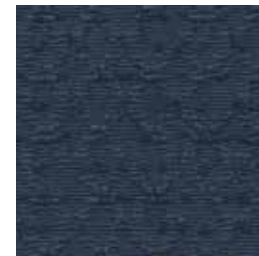
Taupe
1211



Blush
1215



Jade
1220



Blue Marine
1219



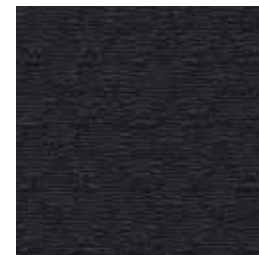
Ash
1210



Poppy
1216



Pine
1221



Ebony
1223



Flannel
1222



Burgundy
1217

Synopsis 2136

Seating | Panel | Acoustic

Specifications

Content	52% post-consumer recycled polyester 48% pre-consumer recycled polyester
Weight	10.6 ± 1.0 oz./lin. yd
Width	54" min. useable
Repeat	7.25" vertical 4.25" horizontal

Cleaning Code

Standard Care Label W-S. Clean with water based cleaning agents, foam or pure, water free solvents. Vacuuming or light brushing is recommended to prevent dust and soil buildup.

Bleach Cleanable - May be cleaned with a 10% bleach-to-water solution. Rinse well after cleaning. May also be disinfected with hydrogen peroxide, alcohol, and quaternary ammonium (quat) based cleaners.

Miscellaneous

- Application testing of this product is recommended.
- Colors may vary between dye lots.
- This is a directional fabric.

Proudly woven in North America supporting our local communities.

Sustainability

100% recycled and recyclable



Performance

Colorfastness to light (AATCC 16.3 Option 3)
Grade 4 min. at 40 hours

Colorfastness to crocking (AATCC 8)
Grade 4 min. dry & Grade 3 min. wet

Breaking Strength (ASTM D5034)
295 lbf warp and 180 lbf fill

Seam Slippage (ASTM D4034)
115 lbf warp and 110 lbf fill

Pilling Resistance (ASTM D3511)
Class 4 min.

Flammability
CA Technical Bulletin 117-2013 Section 1
ASTM E84 Class I or A

Abrasion (ASTM D4157)
100,000 double rubs cotton duck

Acoustical Performance

Our acoustic fabrics are all acoustically transparent. This represents the amount of sound that passes through the fabric.

Acoustic Transparency: 90%

For more detailed results, please consult our website.

This pattern is included in the underwriters laboratory panel fabric recognition program. Additional testing of this U.L. recognized fabric is not required on approved panels from participating manufacturers.

*Certification Marks owned by the Association for Contract Textiles, Inc.

duvalttex

duvalttex

USA & INTERNATIONAL | T 800-544-0200
CANADA | T 418 227-9897
For samples, visit guilfordofmaine.com